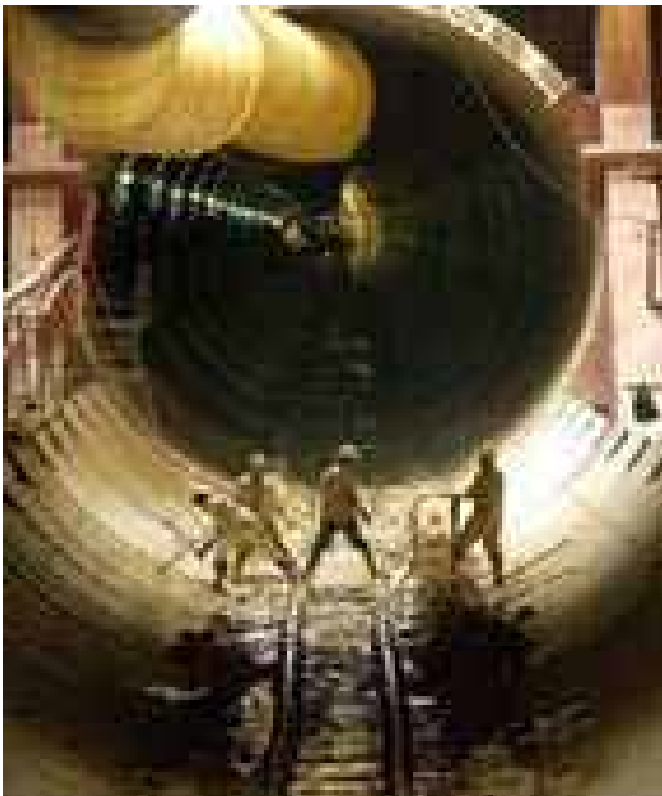


Project Title

Line 1, Metro de Valencia, Valencia, Venezuela

Metro de Valencia, Line 1, is currently under construction and is part of a multi line mass transit network planned for Valencia, a major industrial centre and one of the most important cities in Venezuela.



Running tunnels between El Palotal & Santa Rosa Stations

The initial phase of the project, at a cost US\$240M, requires the construction of a 7.8km long light rail system and eight stations. Approximately 6.4km of the system is underground and includes 3.8km of 9.5m Ø twin track bored tunnel, constructed using a EPBM-TBM and 1.6km of Cut+Cover tunnel. The surface works included 1.4km of track and a train depot. The eight stations; nominally 120m long, 24m wide and constructed to a depth of 20m, comprised three levels and were formed within a diaphragm wall box.

Late September 2004 saw the partial inundation of the works as a consequence of the failure of the junction between the segmentally lined running tunnel and station box at Lara Station.

The inundation carried with it a considerable quantity of material from the surrounding ground, damaging the works themselves and those items of plant and equipment which were then being garaged within the station box. The incident also raised particular concerns as to the potential for surface subsidence, including the possibility of collapses, and the consequent risk to public safety and damage to property.



Map of Valencia Metro showing Lines 1 & 2

ICC was retained by the contractor to handle all the procedural, engineering and commercial issues raised during the course of the resulting insurance claim. This required providing to the insurers the justifications for the Contractor's emergency response to the incident, including the monitoring regime and ground treatment work, and the consequent scope and extent of the claim. Thereafter ICC was responsible for defining, costing and negotiating the Contractor's claim against insurers for all costs incurred as a result of the incident.